



- ◆ High gain, low cost circuit design
- ◆ Low profile and rugged design for outdoor use
- ◆ US Engineered
- ◆ Manufactured under strict US quality control procedures
- ◆ Fits with ARC's IES™, Integrated Enclosure Solution SOLD SEPARATELY— Part # ARC-IE1001K99 or ARC-IE2000K01 (Gen II); ARC ABS™, Articulating Bracket Solution included with ARC-IE2000K01.
- ◆ Custom Enclosures Available

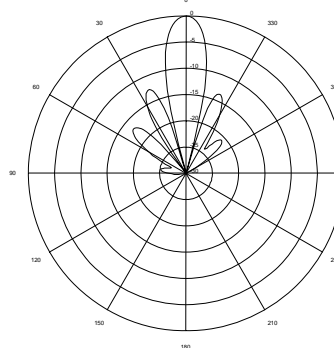
Mechanical and Environmental Specifications	
Length x Width x Depth	15.4in x 15.4in x 1.7in (39.1cm x 39.1cm x 4.3cm)
Weight	2.8lbs (1.3kg)
Backplane	Aluminum
Enclosure	Gray, Powder-coated die-cast aluminum
Radome	Gray, Injection Molded UV stabilized ABS plastic
Wind Survivability	125mph (201kph)
Wind Load	1.65ft ² (0.15m ²)
Operating Temperature Range	-49°F to +149°F (-45°C to +65°C)
Pole Mount Diameter Range	0.75in to 3.0in (1.9cm to 7.6cm)

Electrical Specifications	
Frequency Range	3.3-3.8GHz
Gain	20dBi
3dB Beamwidth Vertical/Horizontal	12deg/13deg
Polarization	Single linear, horizontal or vertical
VSWR	≤1.5:1 typ., ≤1.7:1 max.
Front-to-Back Ratio	>30 dB
Cross Polarization	>30 dB
ETSI	TS 2
Power Rating	30 watts
Impedance	50 ohms
Lightning Protection	DC ground
Connector Type	R/A SMA Jack

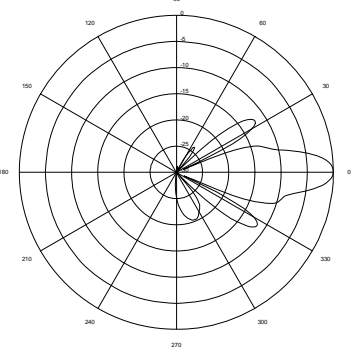
Ordering Information	
<u>Part #</u>	<u>Description</u>
ARC-IA3520B01	3.3-3.8GHZ 20dBi, R/A SMA Jack

Shipping Information	
<u>Sizes and Weights</u>	<u>Description</u>
19in X 16in X 16in (48.3cm x 40.6cm x 40.6cm) 31lb, (14.1kg)	Bulk pack includes 10 antennas in an over pack box

RF Patterns
Vertical Cut, typ.



RF Patterns
Horizontal Cut, typ.

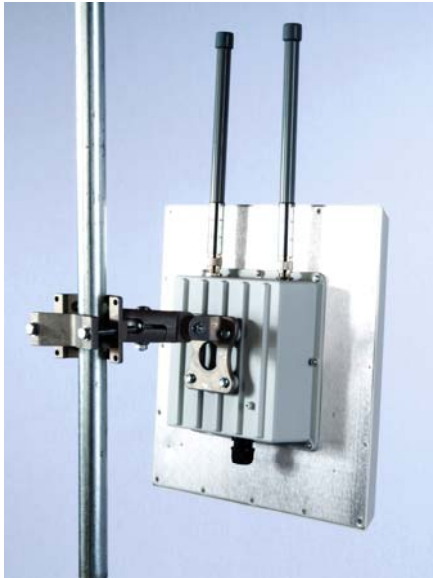


www.antennas.com

Specifications subject to change without notice

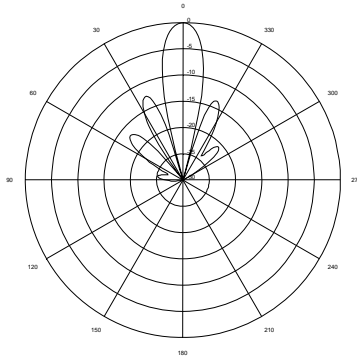
Don't see what you need? Contact us to discuss alternate configurations.

See www.antennas.com for warranty information



Mechanical and Environmental Specifications	
Length x Width x Depth	15.4in x 15.4in x 1.7in (39.1cm x 39.1cm x 4.3cm)
Weight	2.8lbs (1.3kg)
Backplane	Aluminum
Enclosure	Gray, Powder-coated die-cast aluminum
Radome	Gray, Injection Molded UV stabilized ABS plastic
Wind Survivability	125mph (201kph)
Wind Load	1.65ft ² (0.15m ²)
Operating Temperature Range	-49°F to +149°F (-45°C to +65°C)
Pole Mount Diameter Range	0.75in to 3.0in (1.9cm to 7.6cm)

RF Patterns
Vertical Cut, typ.



RF Patterns
Horizontal Cut, typ.

