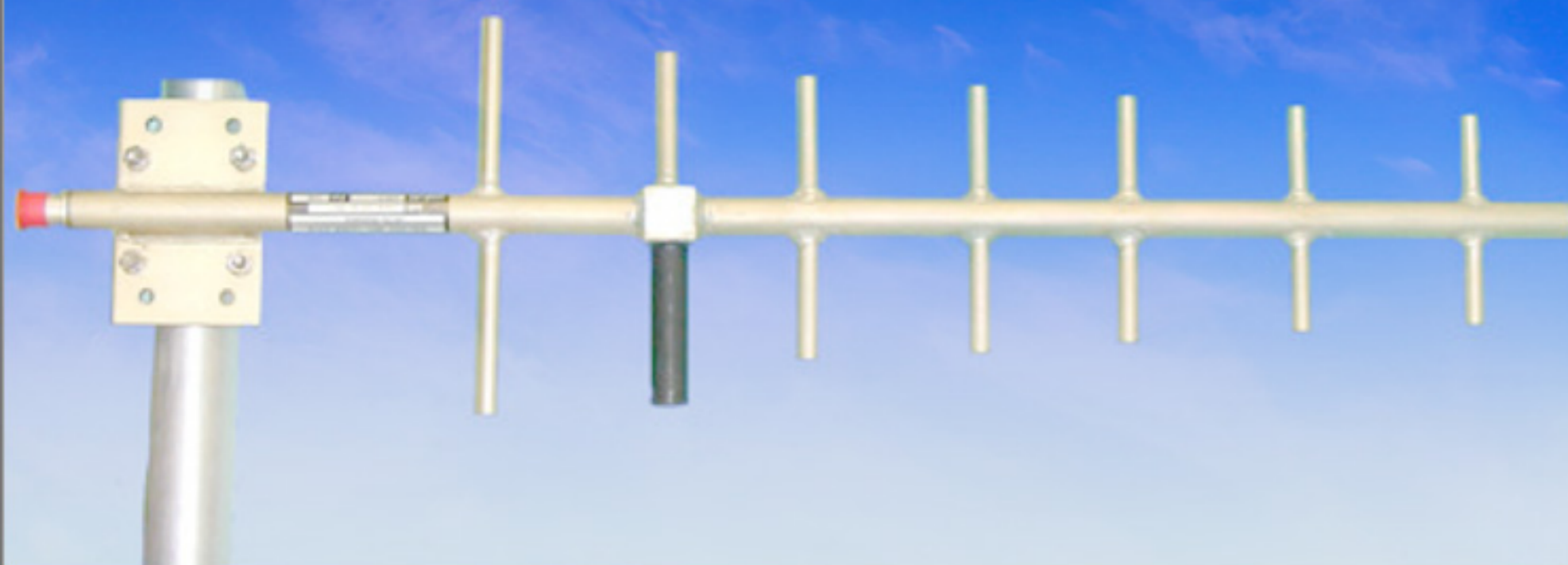


YG55-806-890

Part # 1009-0030-401



Heliarc Welded Aluminum

5 Year Guarantee

806-960 MHz Yagi Antenna

Electrical

Frequency Range	806-869 MHz; 824-896 MHz; 890-960 MHz
VSWR	1.5:1 Typical
Maximum Power Input	60 Watts (+50 dBm)
Forward Gain (over half-wave dipole)	12 dBi
Polarization	Vertical or Horizontal
Vertical Beamwidth (-3dB point)	40 Degrees
Horizontal Beamwidth	55 Degrees
Front-to-back Ratio	- 20 dB

Mechanical

Input Connector	Type N Silverplated Female
Mounting	Stainless Steel U-bolts for 1.25 and 1.75 Inch Diameter Pipe
Antenna Dimensions	6 Inches x 30 Inches
Weight	2.46 lbs
Wind Load at 100	15 lbs
Wind Survival	160 MPH
Lightning Protection	Direct Ground

